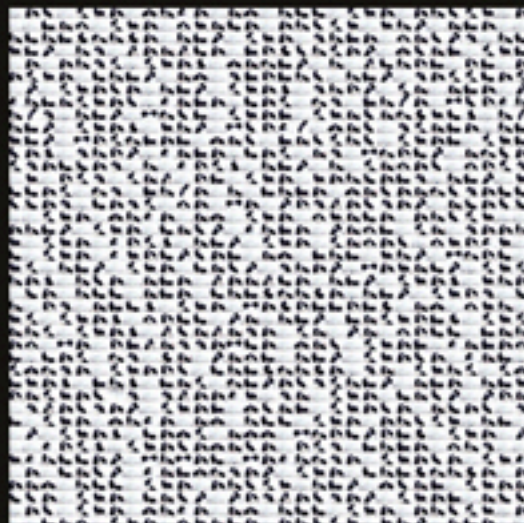
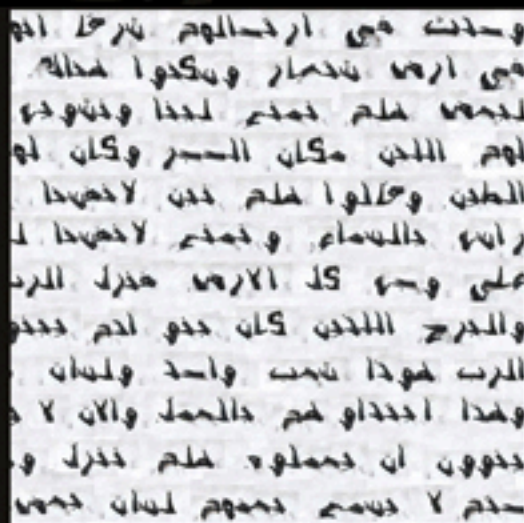


## 535 // MA-P / Laura Todoran



Laura Todoran (b.1980, Serbia/France) - Genèse 11 - Babel -, L'origine des langues (2007-2012)

"The project focuses on the text of Genesis 11, recounting the Tower of Babel myth. Artist used different alphabets, Latin characters and doctylogy (or fingerspelling) used in deaf education. The body painted in white serves as paper, hands painted in black as ink. This writing form revisits the myth that languages have been introduced to create confusion among the people. All these tables show faithfully the text of Genesis in English, the language of communication par excellence. The doctylogy alphabets make the story less accessible including for deaf people, as it is not the sign language in itself but alphabets that are used to spell words. This writing and this language, English, have the power to connect different worlds but yet, over the tables, the myth of Babel becomes increasingly difficult to decipher. Photographed bodies are also the declensions of Humanity, masculine, feminine, from (W) white to (B) black." (Roughly translated by ARTchipe)



- by Henning M. Lederer on October 8, 2012.

Posted in MASTERS PROJECT / machinatorium

## PAGES

[Imprint](#)

## CATEGORIES

[Basement](#)

[MAE / dasma](#)

[MASTERS PROJECT / machinatorium](#)

[MDA1 / Industrial Palace](#)

[MDA2 / Industrial Palace](#)

[MDA3 / Industrial Palace](#)

[MDH1 / Industrial Palace](#)

[MDH2 / machinatorium](#)

[The lab](#)

## ARCHIVES

[January 2014](#)

[December 2013](#)

[November 2013](#)

[October 2013](#)

[September 2013](#)

[July 2013](#)

[June 2013](#)

[May 2013](#)

[April 2013](#)

[March 2009](#)

[February 2009](#)

[January 2009](#)

[December 2008](#)

[November 2008](#)

[October 2008](#)

## TIMETABLE

October 2012						
W	T	W	T	F	S	S
1	2	3	4	5	6	7
8	9	10	11	12	13	14
15	16	17	18	19	20	21
22	23	24	25	26	27	28
29	30	31				
- Sep					Nov -	